



# UTILITY PLASTICS

A Featherridge Company



## PRODUCT CATALOG 2025



### BROADBAND & POWER



A Featherridge Company



## ABOUT:

Utility Plastics, LLC is a plastic utility box and vault manufacturing business headquartered in Valdosta, Georgia.

Our manufacturing facilities are in Boiling Springs, SC and Valdosta, GA. Our team of experts has over combined 80 years of experience in the plastic industry, and we are committed to providing high-quality and reliable products to our customers. We use the latest technology and materials to ensure that our products meet the highest standards of durability and longevity. We have the shortest lead times in the industry!

## COMPETITIVE EDGE:

**QUALITY** – 100% of the products made by Utility Plastics are made in the USA.

**SERVICE** – we pride ourselves on our customer service within our internal team or our extended family of manufacturer reps.

**COMMITMENT** – we are committed to competitive pricing, lead times and loyalty to our end users.



<b>FIBER PEDESTALS</b>	<b>PAGE</b>
• UP-PED-1212	5
• UP-PED-1018	7
 <b>PEDESTRIAN GRADE VAULTS</b>	
• UP1730	10
• UP1520	14
• UP1116	16
 <b>FLOWERPOTS</b>	
• UP1000	18
 <b>ACCESSORIES</b>	
• EMS MARKER	20
 <b>PRO-LITE TIER 22 VAULTS &amp; FLOWER POT</b>	21
 <b>INDEX</b>	26

## UTILITY PLASTICS



100% BEAD & BABA COMPLIANT



MADE IN USA



RECYCLED PLASTIC / RESIN



FOREST FIREPROOF /  
NONCUMBUSTABLE /  
NON FLAMABLE



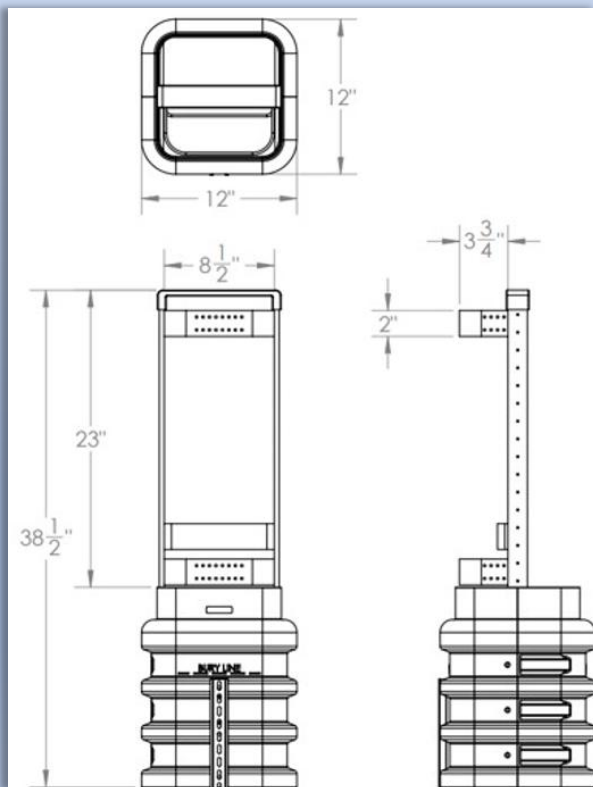


UP-PED-1212

## UP-PED SERIES

PART NUMBER	DESCRIPTION
<b>UP-PED-1212</b>	Standard Base, Tower & Yolk bar
<b>UP-PED-1212-001</b>	1212 with (2) U-guard Inserts
<b>UP-PED-1212-002</b>	1212 with (2) H Bracket inserts
<b>UP-PED-1212-003</b>	1212 w/ Fiber Tray Panel / Center Channel
<b>UP-PED-1212-004</b>	1212 w/ Specialized U-Guards & Clips for NOVUX closure

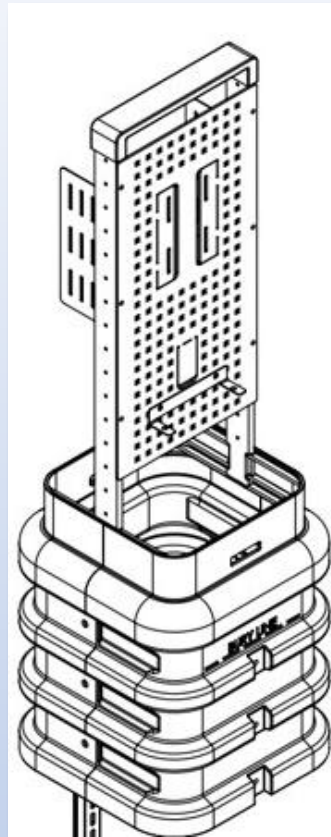
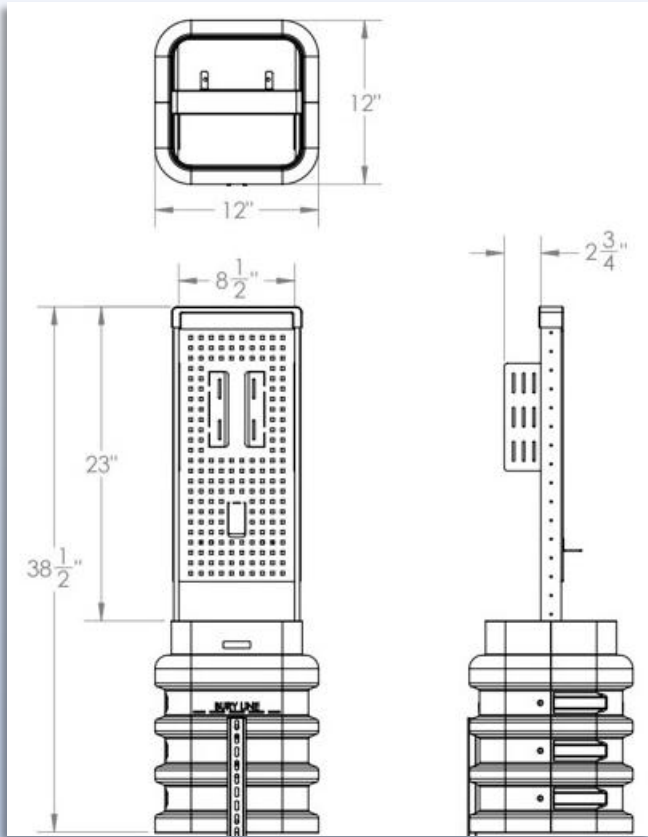
UP-PED-1212-004 W/  
NOVUX CLOSURE



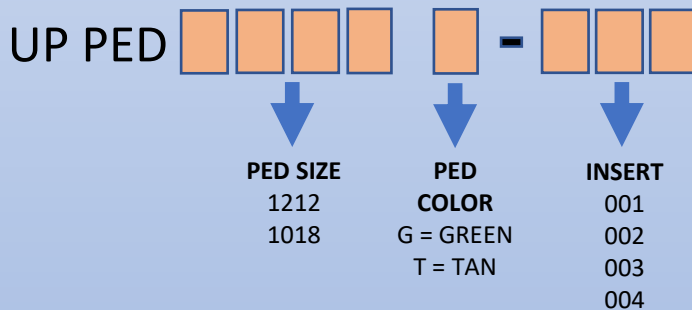
UP-PED-1212-001



# UP-PED-1212 SERIES



UP-PED-1212-003



**EXAMPLE = UP PED 1212-T-001**

This would be a 12" X 12" ped with U-guard inserts and tan TOWER & BASE color

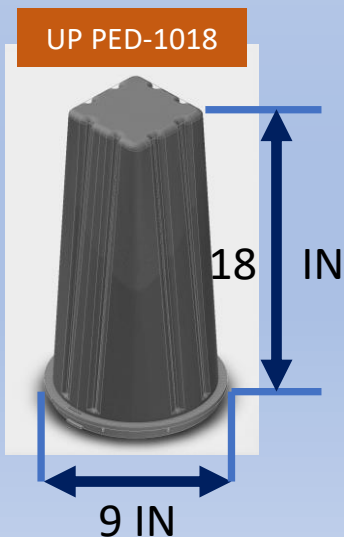
**MOQ – 32 PER PALLET**

**TRUCKLOAD = 26 PALLETS (832 UNITS)  
NON-STACKABLE**

## UP-PED-1018 SERIES



- Material: UV Stabilized Polypropylene
- Estimated Weight: 15.3 oz.
- Color Options: Black, Green, Orange, or Gray  
(Other colors available upon request)
- Snaps into the JD1001 Base
- Easy installation by hand or hand-tools.
- Lockable bolt and type configurations – ***Coming Soon (UP-PED-1018-BD1)***





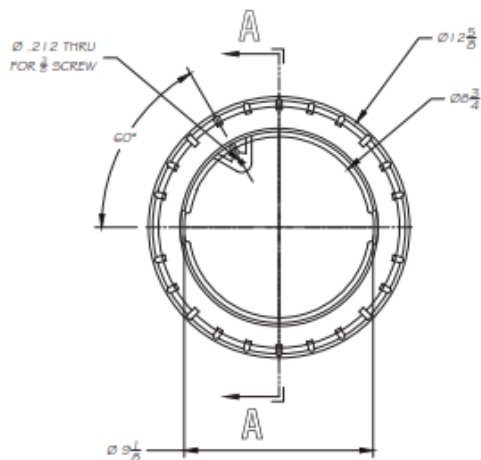
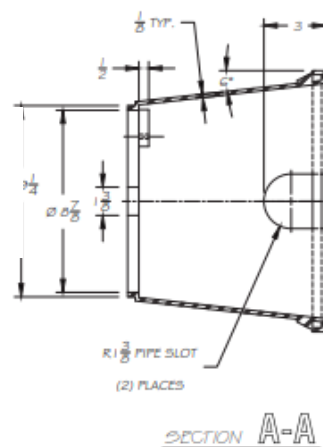
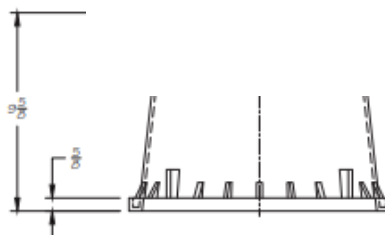
## UP-PED-1018 SERIES


**ITEMS SHOWN:**
**ITEMS SOLD SEPERATELY**

- |                |                      |
|----------------|----------------------|
| • UP1001       | Ships 200 per pallet |
| • UP-PED-1018  | Ships 100 per pallet |
| • UP-PED STAKE | Ships 100 per pallet |

**UP PED STAKE**

42" length, Heavy duty steel with green Telecom grade protective powder coating to match UP-PED


**UP1001**


**MOQ – 100 PER PALLET**

**TRUCKLOAD = 56 PALLETS ( 5,600 UNITS)  
STACKABLE**



## UP-PED-1018 SERIES

### INSTALLATION PROCEDURE

Call 811 - Know what's below. Call before you dig.



Dig 10" x 10" Hole



Set UP1001 in hole



Pack dirt around UP1001

Drive UP Ped Stake inside of UP1001 and leave 12" above lip of UP1001.



Mount the required splice closure or network component to the UP Ped Stake

### UP1730 SERIES

#### UP173018

17"X30"X18" box and lid assembly with multiple choices of lid designs, colors and bolt configurations



- Material: UV Stabilized Polypropylene
- Estimated Weight: 30 lb. 15.3 oz. plus lid
- Base Color: Black, Green, Purple, or Blue (Other colors available upon request)
- Lid Color: Black, Green, Purple, Blue, Tan & Gray. (Other colors available upon request)
- Custom logos available
- **UP** Mouseholes and knockouts for pipe configurations - Mousehole inserts available
- Two JD-1731 bases can be fit together to make a 36" deep enclosure.
- ASTM C857: Pedestrian, light duty non-vehicular traffic situations only. Actual load rating varies by box and lid configuration.
- Field modifications with any cutting tool.
- Easy installation by hand or hand-tools.
- Multiple bolt and type configurations.



UP1731 BASE ONLY

DESCRIPTION	BASIC PART #	LID COLOR	LID TYPE	BOLT CONFIG	EMS	ORDERING PART #
17X30X18 BOX W/ GREEN FLUSHMOUNT LID / NON-LOCKING / NO EMS / LOGO	UP173018	GL	F			UP173018-GL-F-LOGO
17X30X18 BOX W/ GREEN FLUSHMOUNT LID / 2 BOLT / NO EMS / LOGO	UP173018	GL	F	2		UP173018-GL-F-2-LOGO
17X30X18 BOX W/ GREEN FLUSHMOUNT LID / 4 BOLT / NO EMS / LOGO	UP173018	GL	F	4		UP173018-GL-F-4-LOGO
17X30X18 BOX W/ GREEN FLUSHMOUNT LID / 4 BOLT / EMS / LOGO	UP173018	GL	F	4	E	UP173018-GL-F-4-E-LOGO

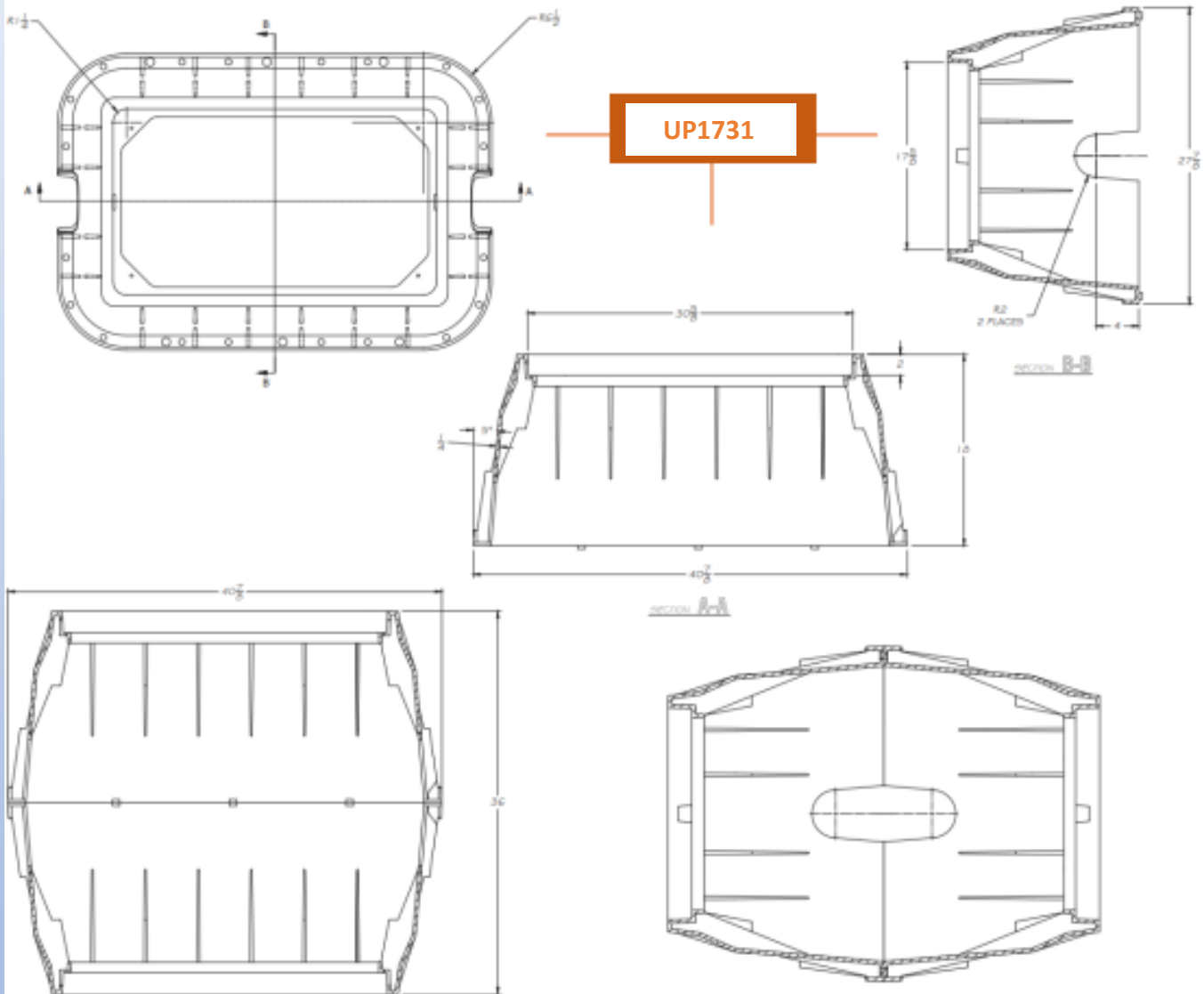
UP1730 SERIES

UP1731

17" X 30" X 18" **BASE ONLY**

UP173018 - KIT

17" X 30" X 18" KIT ASSEMBLY FOR REVERSE STACKING  
HARDWARE INCLUDED IN KIT

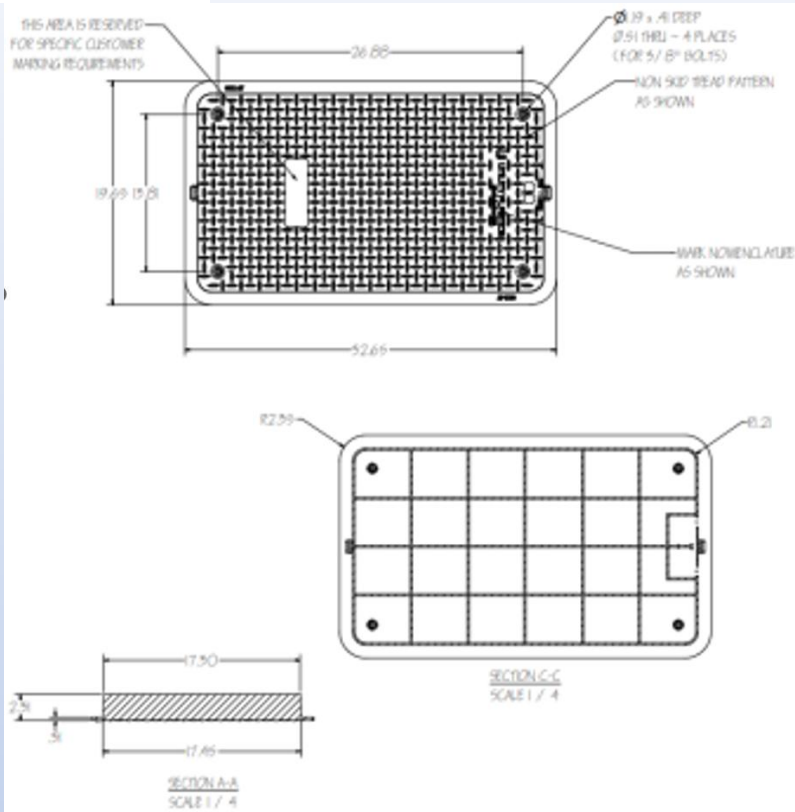


UP173018 - KIT



# UP1730 SERIES

## UP1732GLF



## ORDERING GUIDE

UP173018



-



-



-



-



**LID COLOR**  
GL - GREEN  
BL - BLACK  
TL - TAN  
GY - GRAY



**LID TYPE**  
F = Flushmount



**BOLT TYPE**  
X = None  
1 = 1 Bolt  
2 = 2 Bolt  
4 = 4 Bolt



**EMS MARKER**  
x - NONE  
E - YES



**LID LABEL**  
BLANK  
FIBER  
BROADBAND  
ELECTRIC  
POWER  
**CUSTOM NAME =**  
SPELLED OUT

**EXAMPLE = UP173018-GL-F-4**

This would be a 17" x 30" x 18" BOX Green Flushmount lid w/ 4 locking bolt, no EMS installed and no logo

**MOQ - 10 PER PALLET**

**TRUCKLOAD = 45 PALLETS (450 UNITS)**  
**NON-STACKABLE**

## UP1730 SERIES

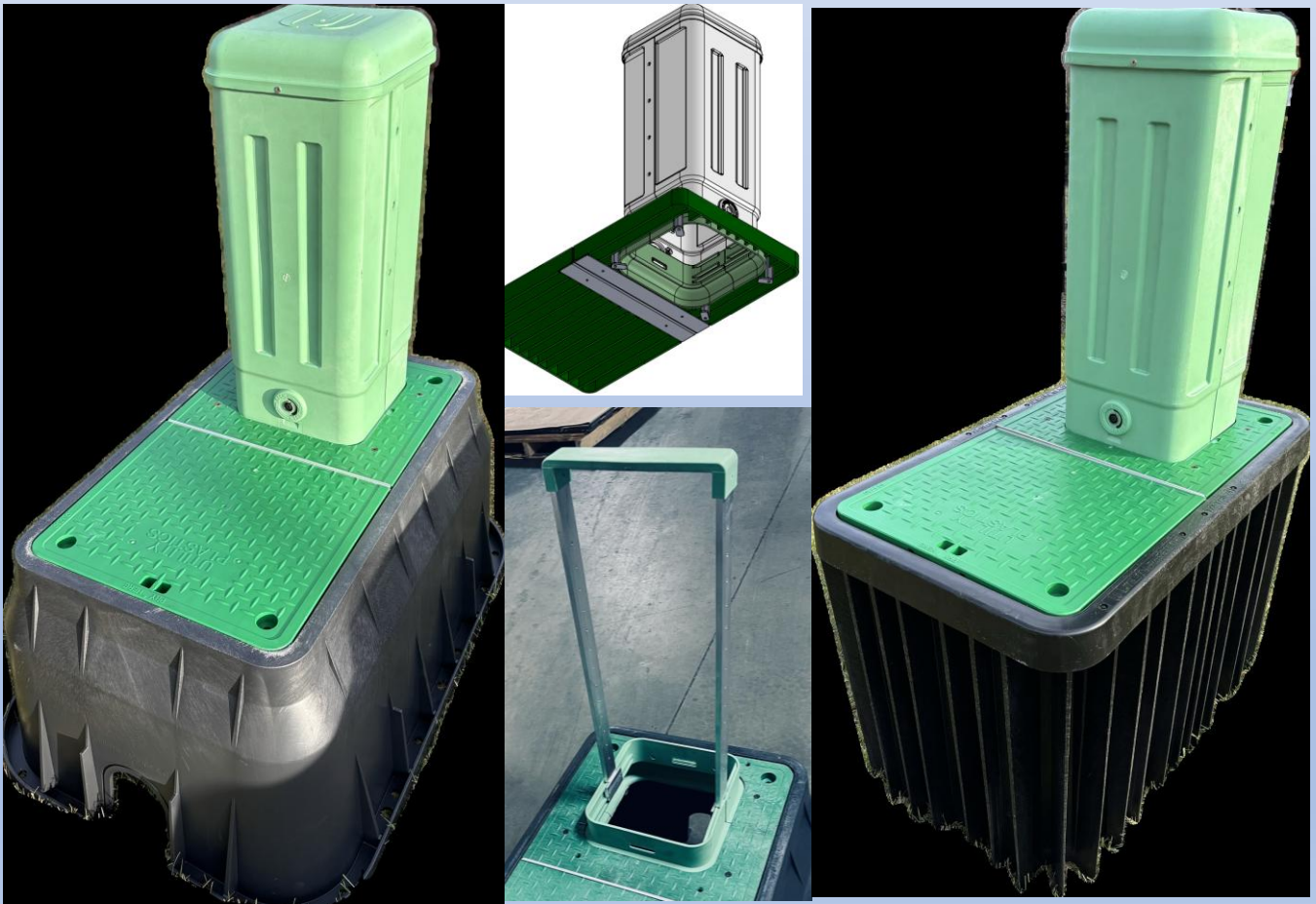
DESCRIPTION	BASIC PART #	LID COLOR	LID TYPE	ORDERING PART #
17X30X18 BOX / BASE ONLY	UP173118			UP1731
17X30 / GREEN LID ONLY (FLUSHMOUNT)	UP1732	GL	F	UP1732-GL-F
17X30 / GREEN LID ONLY (OVERLAP)	UP1732	GL	O	UP1732-GL-O
17X30X18 BLACK BOTTOM & ACC BOLTS	UP173118-KIT			UP173018-KIT
17x30x18 MOUSE HOLE INSERT	UP1730-MH-INS			UP1730-MH-INS
1731 BASE W/ SPLIT LID & UP-PED-1212-001				UP173018-SPGL-F-2/UP-PED-1212-001 COMBO

*Not all part numbers are listed*

**MOQ – 10 PER PALLET**

**TRUCKLOAD = 26 PALLETS (260 UNITS)**

**NON-STACKABLE**



UP173018-SPGL-F-2/UP-PED-1212-001 COMBO  
UP173024-SPGYL-F-2/UP-PED-1212-001 COMBO

## UP1520 SERIES


**DIMENSIONS:**

FLUSHMOUNT LID =	14" X 19"
OVERLAP LID =	15" X 20"
DEPTH =	12"
FLARED BASE =	20" X 26"

**DETAILS:**

- Material: UV Stabilized Polypropylene
- Estimated Weight: 8lb. 9 oz. plus 1 lb. 12 oz. lid
- Base Color: Black
- Lid Color: Green, Tan or Gray
- Custom logo available for lid
- NO Mouseholes
- ASTM C857: Pedestrian, light duty nonvehicular traffic situations only. Actual load rating varies by box and lid combination
- Made in the U.S.A.
- Reverse Stackable to gain 24" depth – no hardware needed

**UP1521 – BASE ONLY**

ALLOWS FOR REVERSE STACK AND GAIN A TOTAL 24" DEPTH.

PART# UP1521

NO HARDWARE NEEDED

SHIPS SEPARATE FROM UP1520

SHIPS 56 PER PALLET



**1 BOLT OPTION ON JD1220 – SHOWN ABOVE**

DESCRIPTION	BASIC PART #	LID COLOR	LID TYPE	BOLT CONFIG	EMS	ORDERING PART #
15X20X12 BOX W/ GREEN FLUSHMOUNT LID / NON-LOCKING / NO EMS / LOGO	UP1520	GL	F			UP1520-GL-F-LOGO
15X20X12 BOX W/ GREEN OVERLAP LID / NON-LOCKING / NO EMS / BLANK	UP1520	GL	O			UP1520-GL-O
15X20X12 BOX W/ GREEN FLUSHMOUNT LID / LOCKING / NO EMS / LOGO	UP1520	GL	F	1		UP1520-GL-F-1-LOGO
15X20X12 BOX W/ GREEN OVERLAP LID / LOCKING / NO EMS / BLANK	UP1520	GL	O	1		UP1520-GL-O-1
15X20X12 BOX W/ GREEN FLUSHMOUNT LID / LOCKING / EMS / LOGO	UP1520	GL	F	1	E	UP1520-GL-F-1-E-LOGO
15X20X12 BOX W/ GREEN OVERLAP LID / LOCKING / EMS / BLANK	UP1520	GL	O	1	E	UP1520-GL-O-1-E
15X20X12 BOX W/ GREEN FLUSHMOUNT LID / LOCKING / EMS / LOGO	UP1520	GL	F	1	E	UP1520-GL-F-1-E-LOGO

*Not all part numbers are listed*



# UP1520 SERIES

## ORDERING GUIDE

UP1520



**LID COLOR**  
GL - GREEN  
BL - BLACK  
TL - TAN  
GY - GRAY



**LID TYPE**  
F = Flushmount  
O = Overlap



**BOLT TYPE**  
X = None  
1 = 1 Bolt



**EMS MARKER**  
x - NO  
E - YES



**LID LABEL**  
BLANK  
FIBER  
BROADBAND  
ELECTRIC  
POWER  
**CUSTOM NAME =**  
SPELLED OUT

**EXAMPLE = UP1520-GL-F-1-E-FIBER**

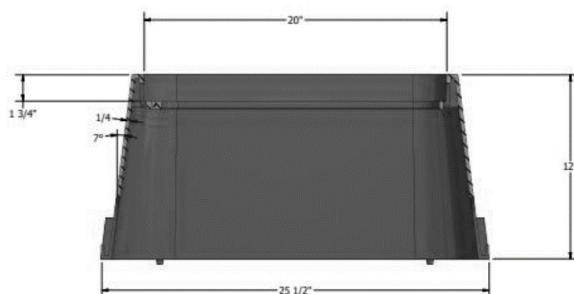
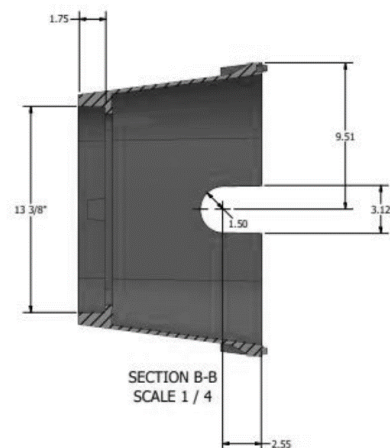
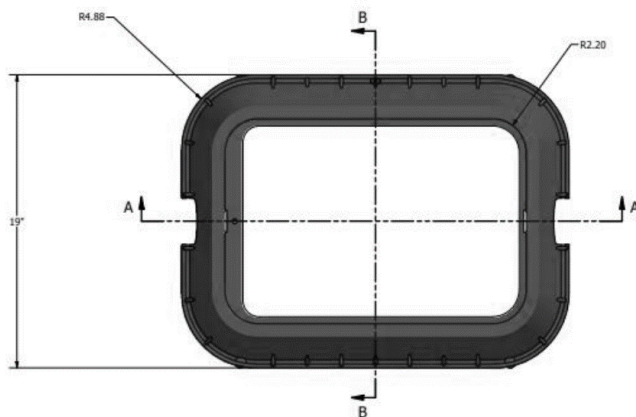
This would be a 15" x 20" x 12" BOX Green Flushmount lid w/ locking bolt, EMS installed and Fiber logo

**MOQ – F = 56 PER PALLET**  
**O = 52 PER PALLET**

**TRUCKLOAD = 52 PALLETS**  
**STACKABLE**

**(F = 2,912 UNITS)**  
**(O = 2,704 UNITS)**

## SPECIFICATIONS



## UP1116 SERIES


**DIMENSIONS:**

FLUSHMOUNT LID =	10" X 15"
OVERLAP LID =	11" X 16"
DEPTH =	12"
FLARED BASE =	16" X 21"

**DETAILS:**

- Material: UV Stabilized Polypropylene
- Estimated Weight: 6 lb. 10 oz. plus 1 lb. 12 oz. lid
- Base Color: Black
- Lid Color: Green, Black, Blue, Purple, Gray, Tan
- Custom logo available to be stamped in lid
- EMS marker available for locating purposes
- Mouseholes and knockouts for pipe configurations
- ASTM C857: Pedestrian, light duty non-vehicular traffic situations only. Actual load rating varies by box and lid combination

**NEW FOR 2023!**
**PART # UP1116-6EXT**

6" EXTENSION ALLOWING AN INTERNAL DEPTH OF 18" WHEN INSTALLED ATOP ANY OF THE UP1116 SERIES BOX LINE

NO HARDWARE NEEDED

SHIPS SEPARATE FROM UP1116



**UP1116GLF1 Shown above with UP1116-6EXT**

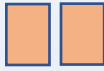
DESCRIPTION	BASIC PART #	LID COLOR	LID TYPE	BOLT CONFIG	EMS	ORDERING PART #
11X16X12 BOX W/ GREEN FLUSHMOUNT LID / NON-LOCKING / NO EMS / LOGO	UP1116	GL	F			UP1116-GL-F-LOGO
11X16X12 BOX W/ GREEN OVERLAP LID / NON-LOCKING / NO EMS / BLANK	UP1116	GL	O			UP1116-GL-O
11X16X12 BOX W/ GREEN FLUSHMOUNT LID / LOCKING / NO EMS / LOGO	UP1116	GL	F	1		UP1116-GL-F-1-LOGO
11X16X12 BOX W/ GREEN OVERLAP LID / LOCKING / NO EMS / BLANK	UP1116	GL	O	1		UP1116-GL-O-1
11X16X12 BOX W/ GREEN FLUSHMOUNT LID / LOCKING / EMS / LOGO	UP1116	GL	F	1	E	UP1116-GL-F-1-E-LOGO
11X16X12 BOX W/ GREEN OVERLAP LID / LOCKING / EMS / BLANK	UP1116	GL	O	1	E	UP1116-GL-O-1-E

*Not all part numbers are listed*

# UP1116 SERIES

## ORDERING GUIDE

UP1116



**LID COLOR**  
GL - GREEN  
BL - BLACK  
TL - TAN  
GY - GRAY

**LID TYPE**  
F = Flushmount  
O = Overlap

**BOLT TYPE**  
X = None  
1 = 1 Bolt

**EMS MARKER**  
x - NO  
E - YES

**LID LABEL**  
BLANK  
FIBER  
BROADBAND  
ELECTRIC  
POWER  
**CUSTOM NAME =**  
SPELLED OUT

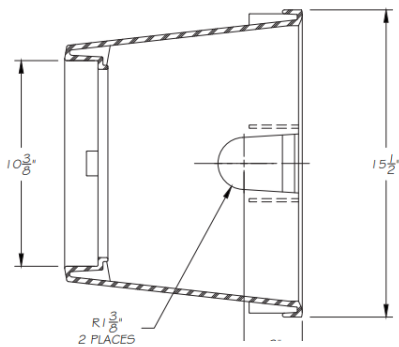
### EXAMPLE = UP1116-GL-F-E-POWER

This would be a 11" x 16" x 12" BOX Green Flushmount lid w/ no locking bolt, EMS installed and FOWER logo

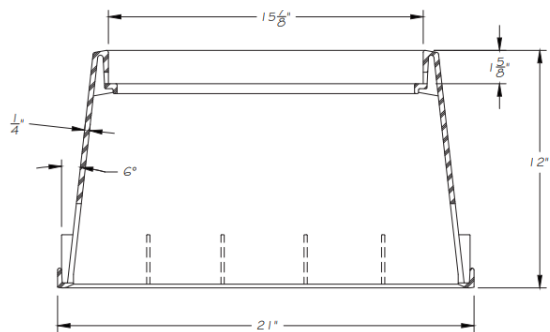
**MOQ – 72 PER PALLET**

**TRUCKLOAD = 52 PALLETS (3,744 UNITS)**  
**STACKABLE**

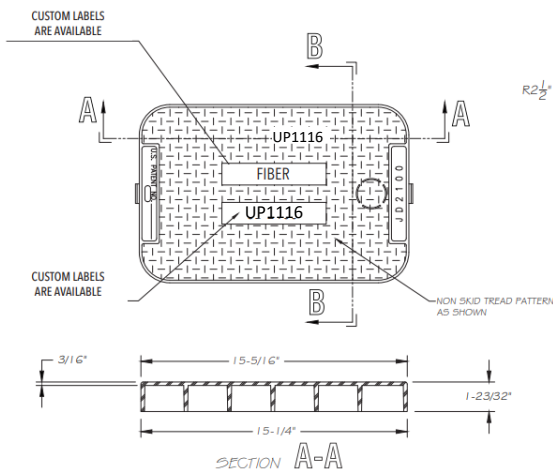
## SPECIFICATIONS



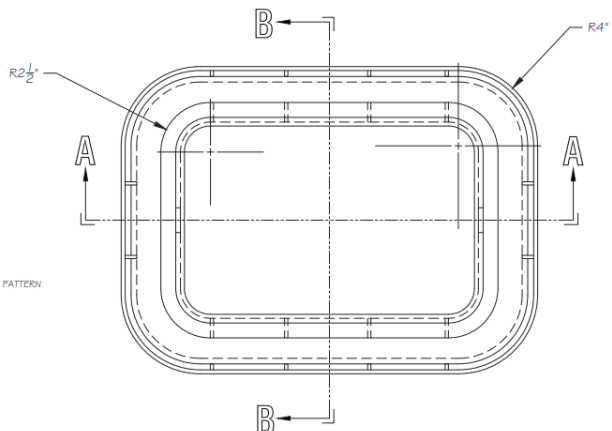
SECTIC... --



SECTION A-A



SECTION A-A

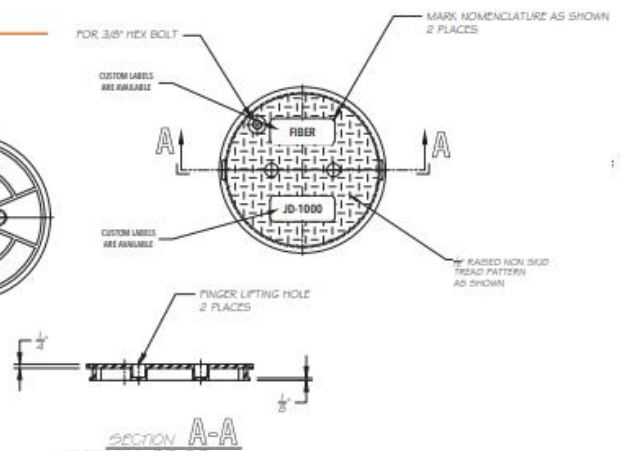
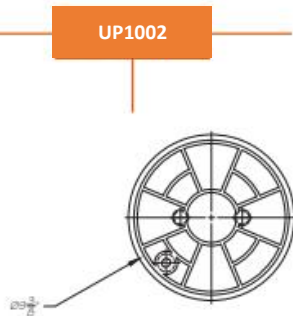
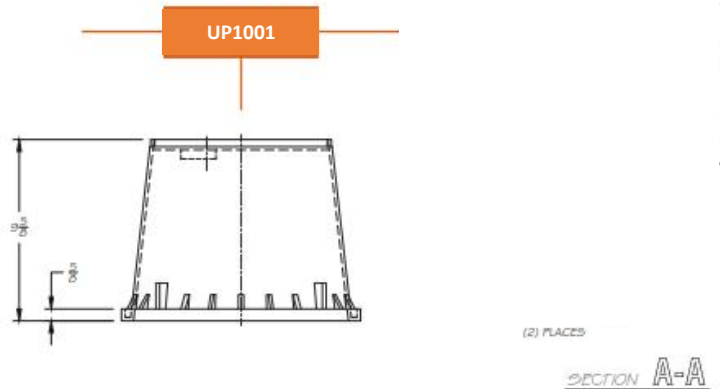
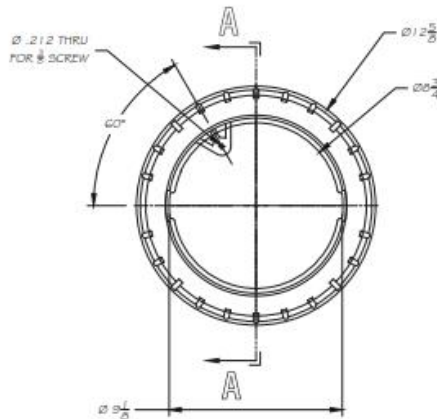




## UP1000 SERIES

### UP1000 SERIES | FEATURES AND SPECIFICATIONS

- Material: UV Stabilized Polypropylene
- Estimated Weight: 1 lb. 12 oz. plus 0 lb. 9.5 oz
- Base Color: Black
- Lid Color: Green; Also available in Black or Purple upon request
- Reinforced bottom edge for retained shape
- Twist-Lock Lid for preventing mower suction and blade damage
- Mouseholes and knockouts for pipe configurations
- ASTM C857: Pedestrian, light duty non-vehicular traffic situations only. Actual load rating varies by box and lid combination
- Field modifications with any cutting tool



# UP1000 SERIES

DESCRIPTION	BASIC PART #	LID TYPE	BOLT CONFIG	EMS	CUSTOM LOGO	ORDERING PART #
10" FLOWERPOT - NO LOGO	UP1000	GL				UP1000-GL
10" FLOWERPOT – W/ LOGO	UP1000	GL			LOGO	UP1000-GL-LOGO
10" FLOWERPOT – LOCKING NO LOGO	UP1000	GL	1			UP1000-GL-1
10" FLOWERPOT – LOCKING / BLANK	UP1000	GL	1		LOGO	UP1000-GL-1-LOGO
10' FLOWERPOT – NO LOCKING & EMS	UP1000	GL		EMS		UP1000-GL-E
10" FLOWERPOT – LOCKING/EMS/ BLANK	UP1000	GL	1	EMS	LOGO	UP1000-GL-1-E-LOGO
10" FLOWERPOT – NO LOCKING / EMS/ LOGO	UP1000	GL		EMS	LOGO	UP1000-GL-E-LOGO
10" FLOWERPOT – LOCKING / NO EMS / LOGO	UP1000	GL	1		LOGO	UP1000-GL-1-LOGO
10" FLOWERPOT – BASE ONLY	UP1001					UP1001
10" FLOWERPOT – LID ONLY	UP1002					UP1002
10" FLOWERPOT LID - HAND TOOL						UP1002-HT
7" FLOWERPOT	UP7000					UP7000-GL
6" FLOWERPOT	UP6000					UP6000-GL

*Not all part numbers are listed*

**MOQ – 200 PER PALLET**

**TRUCKLOAD = 52 PALLETS (10,400 UNITS)  
STACKABLE**

## ORDERING GUIDE

UP1000



**LID COLOR**  
GL - GREEN  
BL – BLACK  
TL – TAN  
GY - GRAY

–



**BOLT TYPE**  
X = None  
1 = 1 Bolt

–



**EMS MARKER**  
x - NO  
E - YES

–



**LID LABEL**  
BLANK  
FIBER  
BROADBAND  
ELECTRIC  
POWER  
**CUSTOM NAME =  
SPELLED OUT**

**EXAMPLE = UP1000-GL-E-POWER**

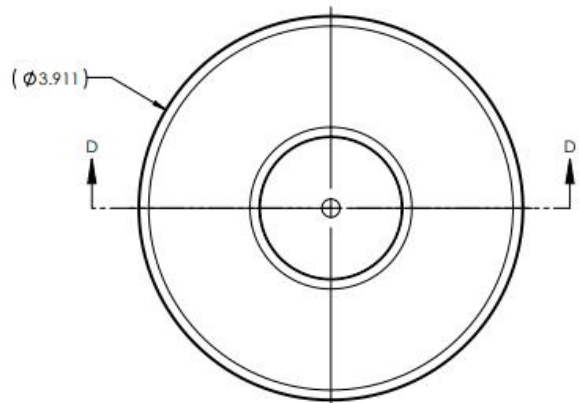
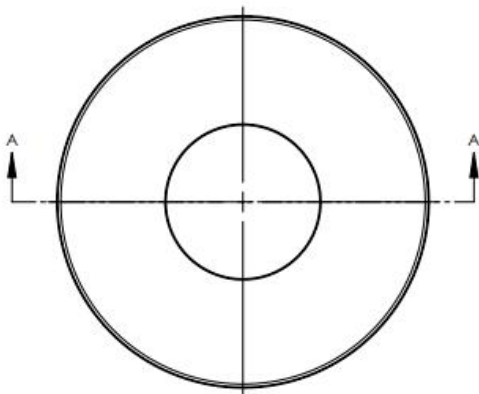
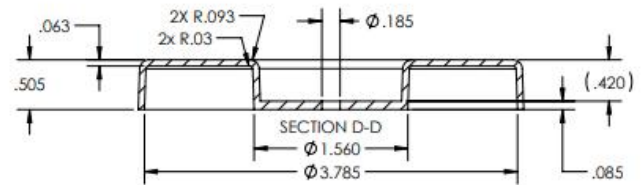
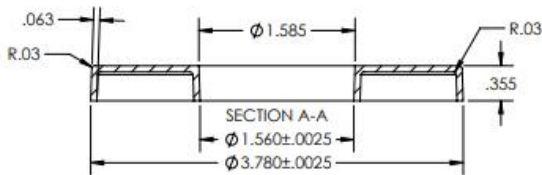
This would be a 11" x 16" x 12" BOX Green lid w/ no locking bolt, EMS installed and POWER logo

## EMS MARKER



### UP-EMS | FEATURES AND SPECIFICATIONS

- Dimensions: 3.780 inch diameter; 0.860 inch height
- Color: Orange
- Burial Depth: 3.5 feet
- Marker Function: Passive
- Marker Range: 3.5 feet







## **TIER 22 VAULTS & FLOWERPOTS**



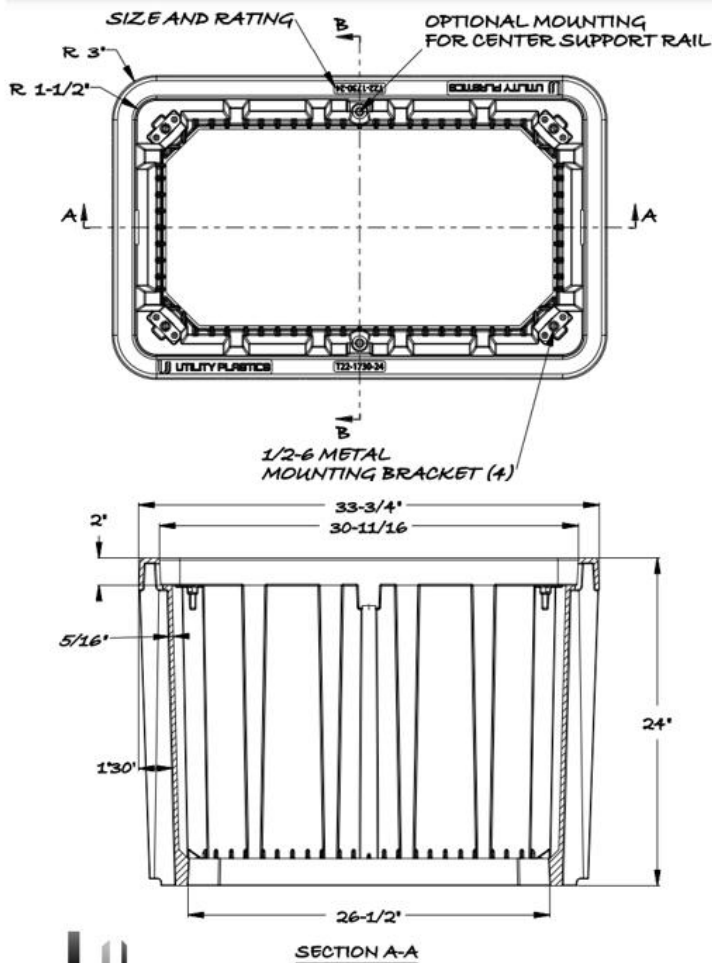
**4 PER PALLET  
STACKABLE**

**MOQ = TRUCKLOAD / 52 PALLETS (208 UNITS)**





## TIER 22 VAULTS & FLOWERPOTS



4 PER PALLET  
STACKABLE

MOQ = TRUCKLOAD / 52 PALLETS (208 UNITS)

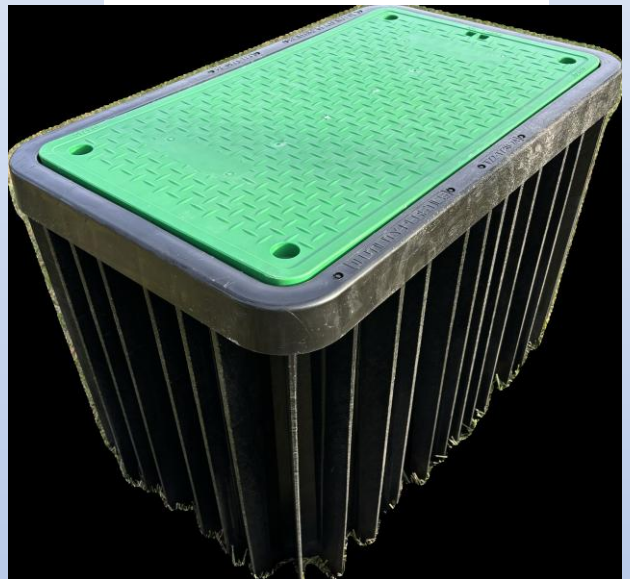


**TIER 22 VAULTS & FLOWERPOTS**

**UP173024-T22-GYL-F-4**



**UP173024-GL-F-4**

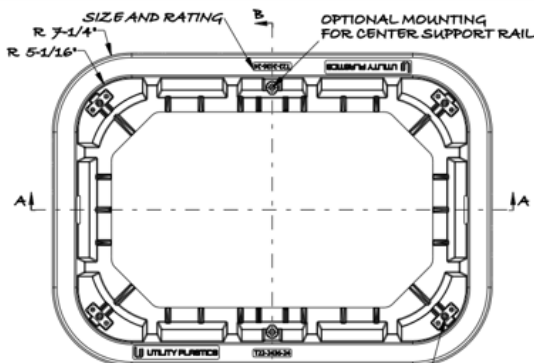


**4 PER PALLET  
STACKABLE**

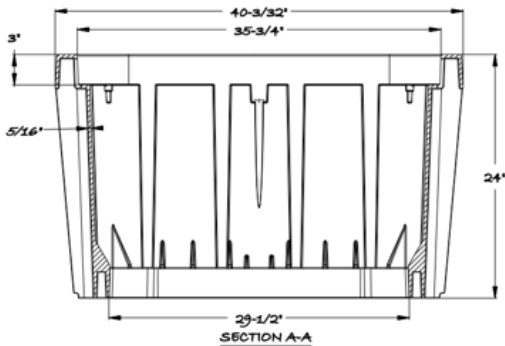
**MOQ = TRUCKLOAD / 52 PALLETS (208 UNITS)**



## TIER 22 VAULTS & FLOWERPOTS

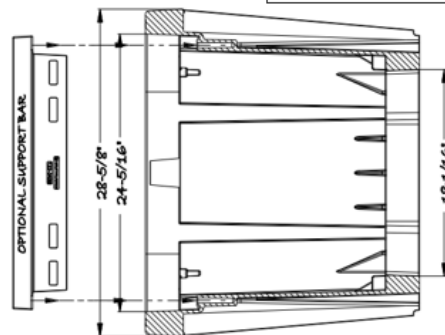


1/2-6 METAL  
MOUNTING BRACKET (4)

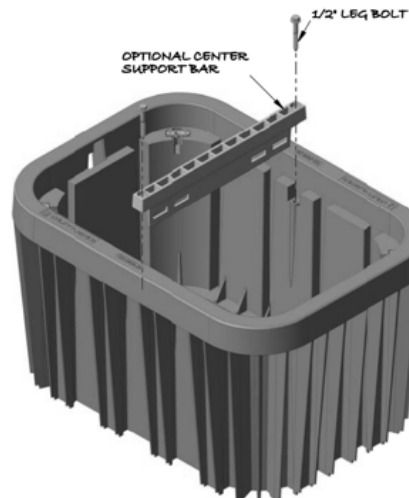


SECTION A-A

## 24" X 36" X 24" TIER 22



SECTION B-B



UP243624-GYL-F-2



UTILITY PLASTICS

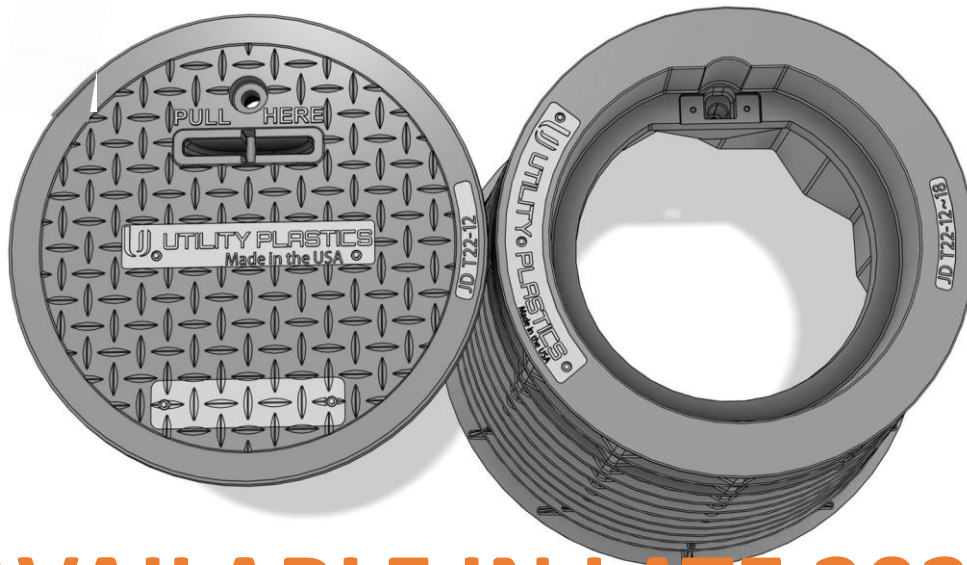
4 PER PALLET  
STACKABLE

MOQ = TRUCKLOAD / 52 PALLETS (208 UNITS)



**TIER 22 VAULTS & FLOWERPOTS**

**UP1218-GYL**



**AVAILABLE IN LATE 2025**



**30 PER PALLET  
STACKABLE**

**MOQ = TRUCKLOAD / 52 PALLETS ( 1,560 UNITS)**



# INDEX



# UTILITY PLASTICS

A Featheridge Company



Utility Plastics - Rectangular Vaults & Flowerpots

## LINE-ITEM BUILD

KEY & GUIDE: PART NUMBER - X1 - X2 - X3 - X4

### EXAMPLES:

- a. UP1000-GL-1-E-FIBER (UP1000 w/ green lid, standard washer bolt & EMS marker - FIBER)
- b. UP1116-GL-F-BLANK (UP1116 w/ flushmount green lid, no bolting, no marker & BLANK)
- c. UP1520-TL-O-1-E-POWER (UP1520 w/ overlapping tan lid, standard washer bolt & EMS marker - POWER)
- d. UP173018-GL-F4-FIBER (UP173018 w/ flushmount green lid, standard 4 bolts, no EMS marker - FIBER)

### Option X1 - Lid style & color

- GL-O - Solid Green Overlapping Lid
- BL-O - Solid Black Overlapping Lid
- TL-O - Solid Tan Overlapping Lid
- GL-F - Solid Green Flush Mount Lid
- BL-F - Solid Black Flush Mount Lid
- TL-F - Solid Tan Flush Mount Lid

### Option X2 - Standard washer/bolt or bolt down

- X - No washer & Bolt
- 1 - Standard Washer / Bolt Installed
- 2,4 - Bolt Down Installed (UP173018, UP173024, UP243624 Only)

### Option X3 - EMS marker

- X - No EMS Marker
- E - EMS marker

### Option X4 - Marking

- X - NO TAG (Blank)

CUSTOM - Customer Name / Logo (Ex. "TELEPHONE, FIBER, POWER, ABC CO")

# INDEX

UP6000 Series - 6" FLOWERPOT				
Part No.	Description	Color Box/Cover	Pallet Qty	Weight Each
Box & Cover				
UP6000-GL	6" Round Std Unit, Round Overlapping Cover	Black/Green	384	1.13
UP6000-BL	6" Round Std Unit, Round Overlapping Cover	Black/Black	384	1.13
UP6000-TL	6" Round Std Unit, Round Overlapping Cover	Black/Tan	384	1.13
Cover Only				
UP6002-GL	6" Round Overlapping Cover, Twist Lock	Green		0.25
UP6002-BL	6" Round Overlapping Cover, Twist Lock	Black		0.25
UP6002-TL	6" Round Overlapping Cover, Twist Lock	Tan		0.25
Box Only				
UP6001	6" Round Box Only	Black	384	0.875
UP7000 Series - 7" FLOWERPOT				
Part No.	Description	Color Box/Cover	Pallet Qty	Weight Each
Box & Cover				
UP7000-GL	7" Round Std Unit, Round Overlapping Cover	Black/Green	384	1.29
UP7000-BL	7" Round Std Unit, Round Overlapping Cover	Black/Black	384	1.29
UP7000-TL	7" Round Std Unit, Round Overlapping Cover	Black/Tan	384	1.29
Cover Only				
UP7002-GL	7" Round Overlapping Cover, Snap Lock	Green		0.34
UP7002-BL	7" Round Overlapping Cover, Snap Lock	Black		0.34
UP7002-TL	7" Round Overlapping Cover, Snap Lock	Tan		0.34
Box Only				
UP7001	7" Round Box Only	Black	384	0.95
UP1000 Series - 10" FLOWERPOT				
Part No.	Description	Color Box/Cover	Pallet Qty	Weight Each
Box & Cover				
UP1000-GL	10" Round Std Unit, Round Overlapping Cover	Black/Green	200	2.58
UP1000-BL	10" Round Std Unit, Round Overlapping Cover	Black/Black	200	2.58
UP1000-TL	10" Round Std Unit, Round Overlapping Cover	Black/Tan	200	2.58
Cover Only				
UP1002-GL	10" Round Overlapping Cover, Twist Lock	Green		0.8
UP1002-BL	10" Round Overlapping Cover, Twist Lock	Black		0.8
UP1002-TL	10" Round Overlapping Cover, Twist Lock	Tan		0.8
Box Only				
UP1001	10" Round Box Only		200	1.78
Adders				
1	S.S. 14mm x 1-1/4" Hex Bolt W/ Flg, 1" OD Washer - Installed			
E	EMS Marker - Installed			
Accessories				
SWB1000-ACC	S.S. 14mm x 1-1/4" Hex Bolt W/ Flg, 1" OD Washer (25pack)			
EMS-ACC	EMS Marker Accessory			

# INDEX

UP1116 Series - 11" x 16" Rectangular Vault				
Part No.	Description	Color Box/Cover	Pallet Qty	Weight Each
Box & Cover				
UP1116-GL-O	11" x 16" Std Unit, Overlapping Cover	Black/Green	72	10.53
UP1116-BL-O	11" x 16" Std Unit, Overlapping Cover	Black/Black	72	10.53
UP1116-TL-O	11" x 16" Std Unit, Overlapping Cover	Black/Tan	72	10.53
UP1116-GL-F	11" x 16" Std Unit, Flushmount Cover	Black/Green	72	9.39
UP1116-BL-F	11" x 16" Std Unit, Flushmount Cover	Black/Black	72	9.39
UP1116-TL-F	11" x 16" Std Unit, Flushmount Cover	Black/Tan	72	9.39
Cover Only				
UP1116-2-G-O	11" x 16" Overlapping Cover, Solid, Drop In	Green	252	3.34
UP1116-2-B-O	11" x 16" Overlapping Cover, Solid, Drop In	Black	252	3.34
UP1116-2-T-O	11" x 16" Overlapping Cover, Solid, Drop In	Tan	252	3.34
UP1116-2-G-F	11" x 16" Flushmount Cover, Solid, Drop In	Green	252	2.2
UP1116-2-B-F	11" x 16" Flushmount Cover, Solid, Drop In	Black	252	2.2
UP1116-2-T-F	11" x 16" Flushmount Cover, Solid, Drop In	Tan	252	2.2
Box Only				
UP1116-1-B	14" x 19" x 12" Rectangular Box Only	Green	72	7.17
Adders				
1	S.S. 3/8" x 2-1/2" Hex Bolt, 1" OD Washer, Retainer Clip - Installed			
E	EMS Marker Installed			
Accessories				
SWB1116	S.S. 3/8" x 2-1/2" Hex Bolt, 1" OD Washer, Retainer Clip (25pack)			
EMS-ACC	EMS Marker Accessory			
UP1520 SERIES - 15" X 20" Rectangular Vault				
Part No.	Description	Color Box/Cover	Pallet Qty	Weight Each
Box & Cover				
UP1520-GL-O	15" x 20" Std Unit, Overlapping Cover	Black/Green	52	14.03
UP1520-BL-O	15" x 20" Std Unit, Overlapping Cover	Black/Black	52	14.03
UP1520-TL-O	15" x 20" Std Unit, Overlapping Cover	Black/Tan	52	14.03
UP1520-GL-F	15" x 20" Std Unit, Flushmount Cover	Black/Green	56	13.63
UP1520-BL-F	15" x 20" Std Unit, Flushmount Cover	Black/Black	56	13.63
UP1520-TL-F	15" x 20" Std Unit, Flushmount Cover	Black/Tan	56	13.63
Cover Only				
UP1522-GL-O	15" x 20" Overlapping Cover, Solid, Drop In	Green		4.21
UP1522-BL-O	15" x 20" Overlapping Cover, Solid, Drop In	Black		4.21
UP1522-TL-O	15" x 20" Overlapping Cover, Solid, Drop In	Tan		4.21
UP1522-GL-F	15" x 20" Flushmount Cover, Solid, Drop In	Green		3.83
UP1522-BL-F	15" x 20" Flushmount Cover, Solid, Drop In	Black		3.83
UP1522-TL-F	15" x 20" Flushmount Cover, Solid, Drop In	Tan		3.83
Box Only				
UP1521	15" x 20" x 12" Rectangular Box Only	Black	56	9.8
Adders				
1	S.S. 3/8" x 2-1/2" Hex Bolt, 1" OD Washer, Retainer Clip - Installed			
E	EMS Marker Installed			
Accessories				
SWB1520	S.S. 3/8" x 2-1/2" Hex Bolt, 1" OD Washer, Retainer Clip (25pack)			
EMS-ACC	EMS Marker Accessory			

# INDEX

UP1730 SERIES - 17" X 30" Rectangular Vault				
Part No.	Description	Color Box/Cover	Pallet Qty	Weight Each
Box & Cover				
UP173018-GL-F	17" x 30" Std Unit, Flushmount Cover	Black/Green	10	40
UP173018-BL-F	17" x 30" Std Unit, Flushmount Cover	Black/Black	10	40
UP173018-TL-F	17" x 30" Std Unit, Flushmount Cover	Black/Tan	10	40
Cover Only				
UP1732-GL-F	17" x 30" Flushmount Cover, Solid, Drop In	Green	40	11
UP1732-BL-F	17" x 30" Flushmount Cover, Solid, Drop In	Black	40	11
UP1732-TL-F	17" x 30" Flushmount Cover, Solid, Drop In	Tan	40	11
Box Only				
UP1731	17" x 30" x 18" Rectangular Box Only	Black	10	29
Adders				
2	2 - S.S. 3/8" x 2-1/2" Hex Bolt, 1" OD Washer, Retainer Clip - Installed			
4	4 - S.S. 3/8" x 2-1/2" Hex Bolt, 1" OD Washer, Retainer Clip - Installed			
E	EMS Marker Installed			
Accessories				
SWB1730	S.S. 3/8" x 2-1/2" Hex Bolt, 1" OD Washer, Retainer Clip (25pack)			
EMS-ACC	EMS Marker Accessory			
PROT-LITE SERIES UP173024 SERIES - 17" X 30" X 24" TIER 22 Rectangular Vault				
Part No.	Description	Color Box/Cover	Pallet Qty	Weight Each
Box & Cover				
UP173024-GLY-F-2	17" x 30" x 24" Tier 22 Vault, Flushmount Cover (Gray in Color)	Gray / Gray	4	140
Cover Only				
UP1732-GLY-F	17" x 30" Flushmount Cover, Solid, Drop In (Gray in Color)	Gray	20	20
Adders				
2	2 - S.S. 3/8" x 2-1/2" Hex Bolt, 1" OD Washer, Retainer Clip - Installed			
4	4 - S.S. 3/8" x 2-1/2" Hex Bolt, 1" OD Washer, Retainer Clip - Installed			
E	EMS Marker Installed			
Accessories				
SWB1730	S.S. 3/8" x 2-1/2" Hex Bolt, 1" OD Washer, Retainer Clip (25pack)			
EMS-ACC	EMS Marker Accessory			
PRO-LITE SERIES UP243624 SERIES - 24" X 36" X 24" TIER 22 Rectangular Vault				
Part No.	Description	Color Box/Cover	Pallet Qty	Weight Each
Box & Cover				
UP243624-GLY-F-2	24" x 36" x 24" Tier 22 Vault, Flushmount Cover (Gray in Color)	Gray / Gray	4	160
Cover Only				
UP2432-GLY-F	24" x 36" Flushmount Cover, Solid, Drop In (Gray in Color)	Gray	20	30
Adders				
2	2 - S.S. 3/8" x 2-1/2" Hex Bolt, 1" OD Washer, Retainer Clip - Installed			
4	4 - S.S. 3/8" x 2-1/2" Hex Bolt, 1" OD Washer, Retainer Clip - Installed			
E	EMS Marker Installed			
Accessories				
SWB1730	S.S. 3/8" x 2-1/2" Hex Bolt, 1" OD Washer, Retainer Clip (25pack)			
EMS-ACC	EMS Marker Accessory			



## Utility Plastics: Competitor Product Comparison

Master#	Description	NDS	OLD CASTLE	DS	DFW	CHANNEL	3M
UP6000	6x9 round, flared	107BC, 107BCS, 107BCW, 107BCH	708	DS109		GLB610	
UP7000	7x9 round, flared	N/A (same as 6")	809	DS109		GLB610	
UP1000	10x10 round, flared	111BC, 111BCW, 111BCBW, 112BCS, 112BCW, 111BC SAND	910	DS1100		GLB912, GLB1111	
UP1116	11x16x12, flared	D-1000SG, D-1000SB	1015	DS1000	DFW481C-12		
UP1116-6EXT	11 x 16 x 8 - 6" extension for UP1116						
UP1520	15 X 20 X 12	117BC	1220	DS1500	DFW1324C-12	GLB1620	
UP173018	17 x 30 x 18	326BCDB-BG, 326BCDBW, ETC.	1730	DS1500	DFW1730CH-18	BULK 3	
UP-PED-1212	12 X 12 X 39					OP12126, LP12126	
EMS	3.7" round, color:orange, range: 3.5'						3M 1411-XR